

VALVES

MANUAL & AUTOMATIC

VALVES
ARE MECHANICAL
DEVICES THAT
CONTROL THE **FLOW**
AND **PRESSURE** WITHIN
A SYSTEM
OR PROCESS.

PVC - U
2-WAY DIAPHRAGM
VALVE
DK DN 15 / 65

General:

Material	PVC-U
Seal Material	EPDM
Diaphragm Material	EPDM,FPM,PTFE
Dimensions	DN 16-65



VALVE
SPECIFICATION

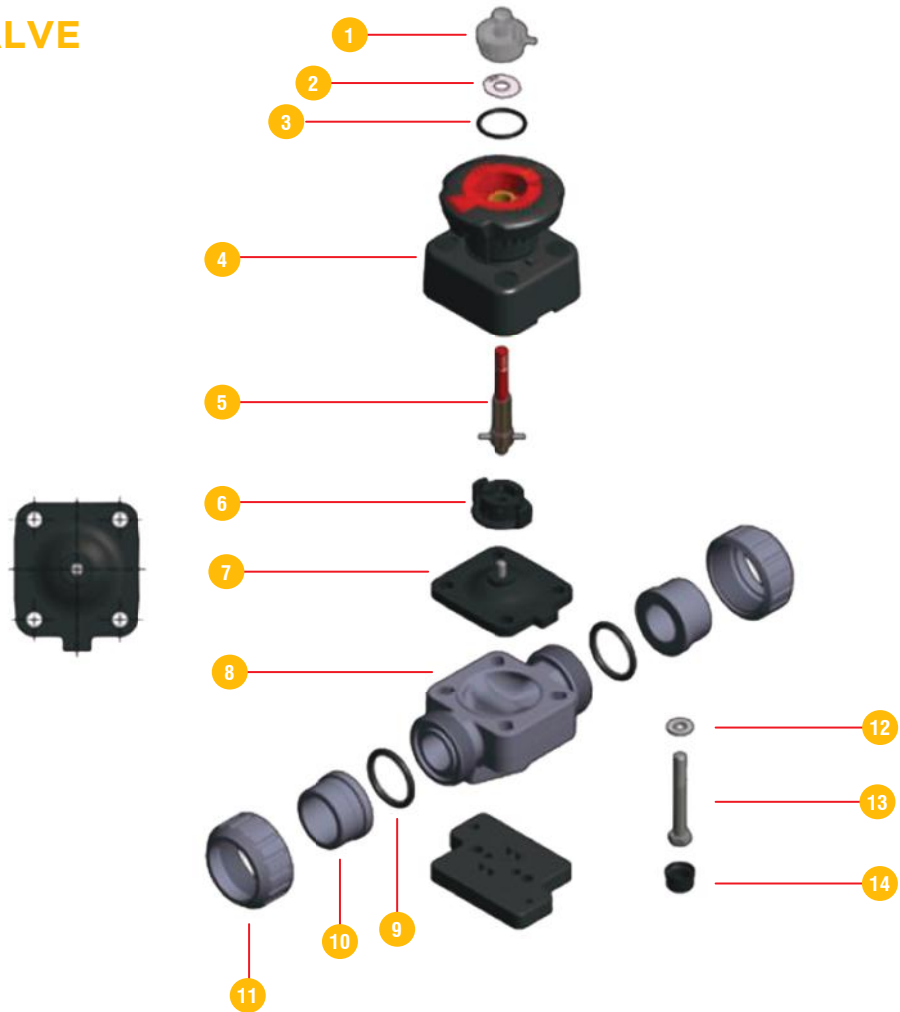
- DK diaphragm valves ideal for precision controlling of all kinds of liquids.
- Improved linearity adjustment allows for extremely sensitive and precise adjustments.
- Suitable for slurries and abrasive media applications.
- visual position indicator and customization.

PRODUCT
FEATURES

- Innovative handwheel with locking device that allows it to be adjusted in over 300 positions.
- Stroke limiter and travel stop adjustment.
- Equipped with anchored bracket system with threaded inserts for direct mounting.
- Floating pin connection system improves the seal and extends its life time.

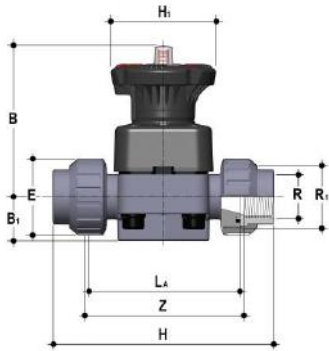
DIAPHRAGM VALVE PVC-U

COMPONENTS Exploded View



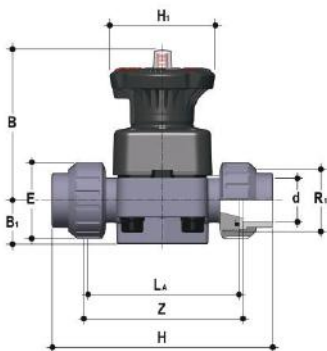
No.	Name	Quantity	Material
1	Transparent Protection Cap	1	PVC-U
2	Customization Plate	1	PVC-U
3	O-Ring	1	EPDM
4	Operating Mechanism	1	PP-GR-PVDF
5	Threaded Stem - Indicator	2	STAINLESS STEEL
6	Compressor	1	PA-GR-IXEF
7	Diaphragm Seal	1	EPDM, FKM, PTFE
8	Valve Body	2	PVC-C
9	Socket Seal O-Ring	1	EPDM-FKM
10	End Connector	2	PVC-C
11	Union Nut	2	PVC-C
12	Washer	4	STAINLESS STEEL
13	Bolt	4	STAINLESS STEEL
14	Protection Plug	4	PE
15	Distance Plate	1	PP-GR
16	Screw	2	STAINLESS STEEL

DIAPHRAGM VALVE PVC-U



CONNECTION TYPES METRIC SOLVENT SOCKET SERIES

PART #	Size	DIMENSIONS (mm)									
	R	DN	PN	B	B1	E	H	H1	L _x	R ₁	Z
O507DKVE10050	1/2"	15	10	102	25	41	131	80	90	1"	97
O507DKVE10075	3/4"	20	10	105	30	50	151	80	108	1 1/4"	118
O507DKVE100100	1"	25	10	114	33	58	165	80	116	1 1/2"	127
O507DKVE100125	1-1/4"	32	10	119	30	72	188	80	134	2	145
O507DKVE100150	1-1/2"	40	10	149	35	79	208	120	154	2 1/2"	165
O507DKVE100200	2"	50	10	172	46	98	246	120	184	2 3/4"	195



CONNECTION TYPES ASTM SOLVENT SOCKET SERIES

PART #	Size	DIMENSIONS (mm)									
	d	DN	PN	B	B1	E	H	H1	L _x	R ₁	Z
O507DKVIE50050	1/2"	15	10	102	25	41	143	80	90	1"	98
O507DKVIE50075	3/4"	20	10	105	30	50	167	80	108	1 1/4"	115
O507DKVIE500100	1"	25	10	114	33	58	180	80	116	1 1/2"	122
O507DKVIE500125	1-1/4"	32	10	119	30	72	208	80	134	2	144
O507DKVIE500150	1-1/2"	40	10	149	35	79	234	120	154	2 1/2"	164
O507DKVIE500200	2"	50	10	172	46	98	272	120	184	2 3/4"	195



MANUAL & AUTOMATIC
VALVES