

VALVES

MANUAL & AUTOMATIC

VALVES
ARE MECHANICAL
DEVICES THAT
CONTROL THE **FLOW**
AND **PRESSURE** WITHIN
A SYSTEM
OR PROCESS.

PVC - U

DUAL BLOCK BALL VALVE ELECTRICALLY ACTUATED

General:

Material	PVC-U
Seal Material	EPDM
Ball Seating Joint	PTFE
Dimensions	10-50



VALVE SPECIFICATION

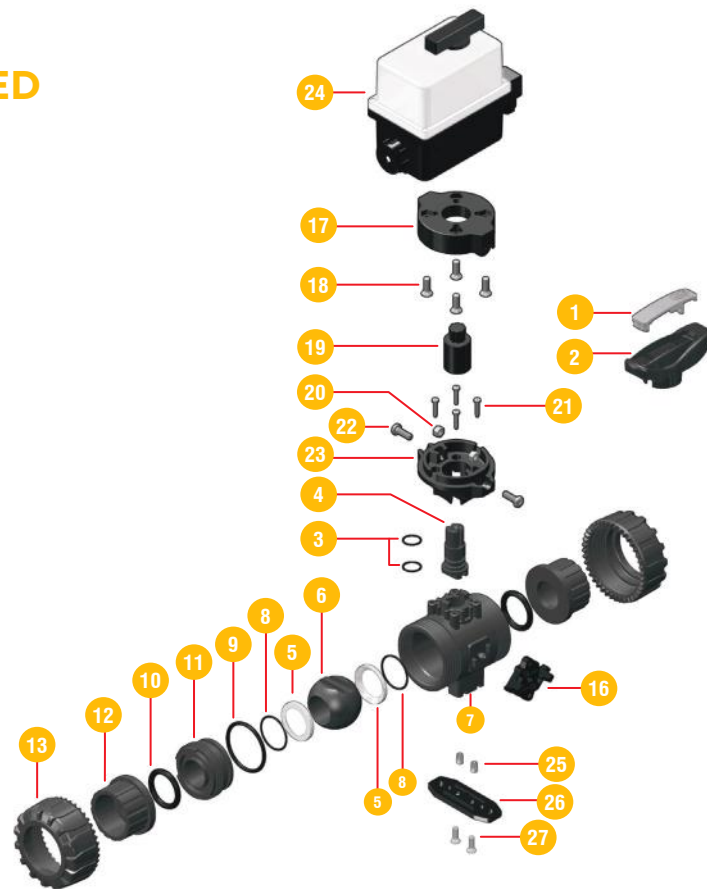
- Each ball valve is mounted with suitable electric quarter turn actuator using a power quick adaptor.
- Electric Actuators are highly effective in closed and non humid environment.
- Additional accessories include smart positioner, Fail safe unit, Heating resistor position feedback.

PRODUCT FEATURES

- On / Off or modulating functions.
- Thermoplastic case to prevent corrosion.
- Manual override as standard, Availability of wide range of accessories.
- Dual block patented union nut locking system.
- Floating full bore ball with high surface finish.
- Integrated bracket for valve anchoring.

ELECTRICALLY ACTUATED BALL VALVE

COMPONENTS Exploded View



No.	Name	Quantity	Material
1	Insert	1	PVC-U
2	Handle	1	PVC-U
3	Stem O-Ring	1	EPDM-FPM
4	Stem	1	PVC-U/PP-H/PVC-C/PVD-F
5	Ball Seat	2	PTFE
6	Ball	1	PVC-U/PP-H/PVC-C/PVD-F
7	Body	1	PVC-U/PP-H/PVC-C/PVD-F
8	Support O-Ring For Ball Seat	2	EPDM-FPM
9	Radial Seal O-Ring	1	EPDM-FPM
10	Socket Seal O-Ring	2	EPDM-FPM
11	Support for Ball Seat	1	PVC-U/PP-H/PVC-C/PVD-F
12	End Connector	2	PVC-U/PP-H/PVC-C/PVD-F
13	Union Nut	2	PVC-U/PP-H/PVC-C/PVD-F
14	Dual Block®	1	POM
15	Upper Plate	1	PP-GR
16	Screw	4	STAINLESS STEEL
17	Coupling Spindle	1	PP-GR
18	Nut	2	STAINLESS STEEL
19	Screw	4	STAINLESS STEEL
20	Screw	2	STAINLESS STEEL
21	Lower Plate	1	PP-GR
22	Electric Actuator	1	PA6-NYLON
23	Bracketing Bush	2	STAINLESS STEEL OR BRASS
24	Mounting/Distance Plate	1	PP-GR
25	Screw	2	STAINLESS STEEL

ELECTRICALLY ACTUATED BALL VALVE



CONNECTION TYPE VKDAC / CE 90-240 V AC

PART #	Size	DIMENSIONS (mm)							
	d	DN	PN	E	H	H1	L	Z	g
0507EBHIEI0050	1/2"	15	16	54	117	65	23	72	1792
0507EBHIEI0075	3/4"	20	16	65	129	70	26	78	1923
0507EBHIEI0100	1"	25	16	73	142	78	29	85	2043
0507EBHIEI0125	1 1/4"	32	16	86	162	88	32	98	2400
0507EBHIEI0150	1 1/2"	40	16	98	172	93	35	102	2688
0507EBHIEI0200	2"	50	10	122	199	111	38	123	3311
0507EBLIEI0050	2 1/2"	65	16	164	235	133	44	148	6800
0507EBLIEI0075	3"	80	16	203	270	149	51	168	9620
0507EBLIEI0100	4"	100	16	238	308	167	63	186	13460



CONNECTION TYPE VKDAC / CE 24 V AC / DC

PART #	Size	DIMENSIONS (mm)							
	d	DN	PN	E	H	H1	L	Z	g
0507EBHIEI0050	1/2"	15	16	54	117	65	23	72	1792
0507EBHIEI0075	3/4"	20	16	65	129	70	26	78	1923
0507EBHIEI0100	1"	25	16	73	142	78	29	85	2043
0507EBHIEI0125	1 1/4"	32	16	86	162	88	32	98	2400
0507EBHIEI0150	1 1/2"	40	16	98	172	93	35	102	2688
0507EBHIEI0200	2"	50	10	122	199	111	38	123	3311
0507EBLIEI0050	2 1/2"	65	16	164	235	133	44	148	6800
0507EBLIEI0075	3"	80	16	203	270	149	51	168	9620
0507EBLIEI0100	4"	100	16	238	308	167	63	186	13460



MANUAL & AUTOMATIC
VALVES