

# VALVES

MANUAL & AUTOMATIC

**VALVES**  
ARE MECHANICAL  
DEVICES THAT  
CONTROL THE **FLOW**  
AND **PRESSURE** WITHIN  
**A SYSTEM**  
OR PROCESS.

**PVC - U**  
**DUAL BLOCK**  
**BALL VALVE**  
**PNEUMATICALLY**  
**ACTUATED**

**General:**

Material	PVC-U
Seal Material	EPDM
Ball Seating Joint	PTFE
Dimensions	10-50



**VALVE**  
**SPECIFICATION**

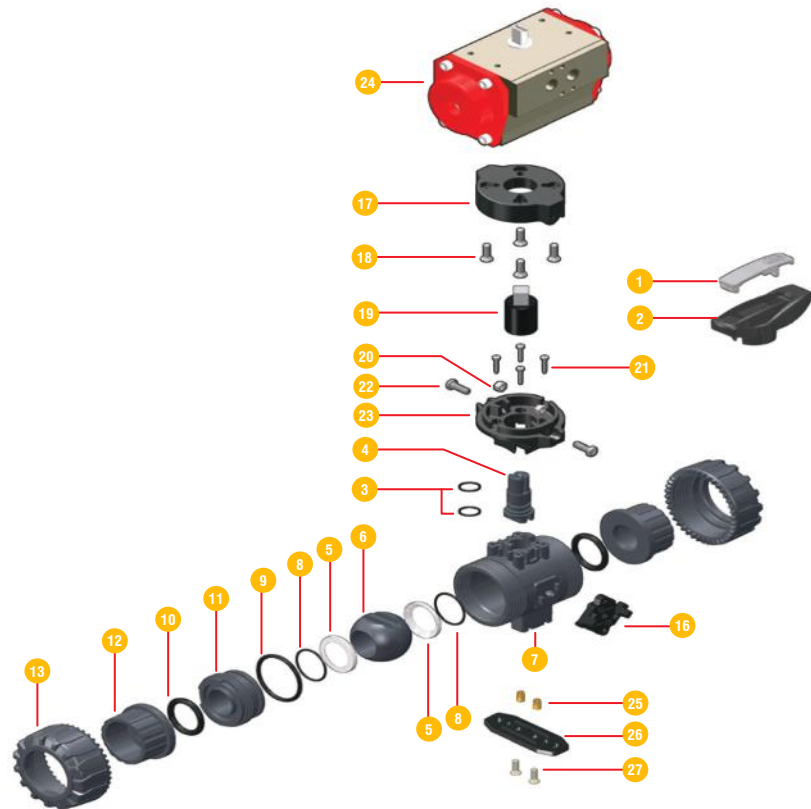
- VKD ball valve is mounted with suitable pneumatic actuator using a flange plate as per ISO 5211.
- Pneumatic actuators are highly effective in open environment, complete operation by compressed air.
- Additional accessories include optical position indicator, Electro pneumatic positioner limit switch box and 3-5/2 way pilot solenoid valve.

**PRODUCT**  
**FEATURES**

- Pneumatic actuator selected according to application requirement of reliability and quality.
- Normally closed, Normally open and double acting functions - All available.
- Valve body in PP-GR resistant to UV rays and completely isolated from fluid.
- Availability of wide range of accessories.
- Including solenoid, limit switches etc.

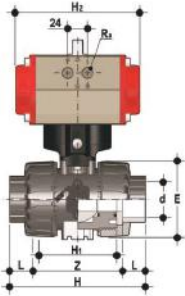
## PNEUMATICALLY BALL VALVE

### COMPONENTS Exploded View



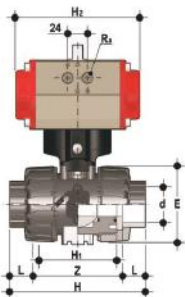
No.	Name	Quantity	Material
1	Insert	1	PVC-U
2	Handle	1	PVC-U
3	Stem O-Ring	1	EPDM-FPM
4	Stem	1	PVC-U/PP-H/PVC-C/PVDF
5	Ball Seat	2	PTFE
6	Ball	1	PVC-U/PP-H/PVC-C/PVDF
7	Body	1	PVC-U/PP-H/PVC-C/PVDF
8	Support O-Ring	2	EPDM-FPM
9	Radial Seal O-Ring	1	EPDM-FPM
10	Radial Seal O-Ring	2	EPDM-FPM
11	Support for ball seat	1	PVC-U/PP-H/PVC-C/PVDF
12	End Connector	2	PVC-U/PP-H/PVC-C/PVDF
13	Union Nut	2	PVC-U/PP-H/PVC-C/PVDF
14	Dual Block®	1	POM
15	Upper Plate	1	PP-GR
16	Screw	4	STAINLESS STEEL
17	Coupling Spindle	1	PP-GR / ACCIAIO INOX
18	Nut	2	STAINLESS STEEL
19	Screw	4	STAINLESS STEEL
20	Screw	2	STAINLESS STEEL
21	Lower Plate	1	PP-GR
22	Pneumatic Actuator	1	H.A. ALLUMINIUM
23	Bracketing Bush	2	STAINLESS STEEL OR BRASS
24	Mounting / Distance Plate	1	PP-GR
25	Screw	2	STAINLESS STEEL

## PNEUMATICALLY BALL VALVE



### CONNECTION TYPE VKDLV / CP NC

PART #	Size	DIMENSIONS (mm)								
	d	DN	PN	E	H	H1	L	Z	H2	g
O507PVDIE10025	3/8"	10	16	54	103	65	15	74	160	1215
O507PVDIE10050	1/2"	15	16	54	110	65	17	70	160	1205
O507PVDIE10075	3/4"	20	16	65	116	70	19	77	138	1583
O507PVDIE10100	1"	25	16	73	134	78	23	83	138	1691
O507PVDIE10125	1 1/4"	32	16	86	153	88	26	94	156	2669
O507PVDIE10150	1 1/2"	40	16	98	156	93	30	104	156	2901
O507PVDIE10200	2"	50	16	122	186	111	36	127	156	3518
O507PVSIE10100	2 1/2"	65	10	164	235	133	44	147	210	1710
O507PVSIE10125	3"	80	10	203	270	149	51	168	228	11450
O507PVSIE10150	4"	100	10	238	308	167	63	186	281	17280



### CONNECTION TYPE VKDLV / CP DA

PART #	Size	DIMENSIONS (mm)								
	d	DN	PN	E	H	H1	L	Z	H2	g
O507PVDIE10025	3/8"	10	16	54	103	65	15	74	160	1215
O507PVDIE10050	1/2"	15	16	54	110	65	17	70	160	1205
O507PVDIE10075	3/4"	20	16	65	116	70	19	77	138	1583
O507PVDIE10100	1"	25	16	73	134	78	23	83	138	1691
O507PVDIE10125	1 1/4"	32	16	86	153	88	26	94	156	2669
O507PVDIE10150	1 1/2"	40	16	98	156	93	30	104	156	2901
O507PVDIE10200	2"	50	16	122	186	111	36	127	156	3518
O507PVSIE10100	2 1/2"	65	10	164	235	133	44	147	210	1710
O507PVSIE10125	3"	80	10	203	270	149	51	168	228	11450
O507PVSIE10150	4"	100	10	238	308	167	63	186	281	17280



MANUAL & AUTOMATIC  
VALVES