

# VALVES

MANUAL & AUTOMATIC

**VALVES**  
ARE MECHANICAL  
DEVICES THAT  
CONTROL THE **FLOW**  
AND **PRESSURE** WITHIN  
**A SYSTEM**  
OR PROCESS.

**PVC - U**  
**BUTTERFLY**  
**VALVE**  
**ELECTRICALLY**  
**ACTUATED**

**General:**

Material	PVC-U
Seal Material	EPDM
Ball Seating Joint	PTFE
Dimensions	10-50



**VALVE**  
**SPECIFICATION**

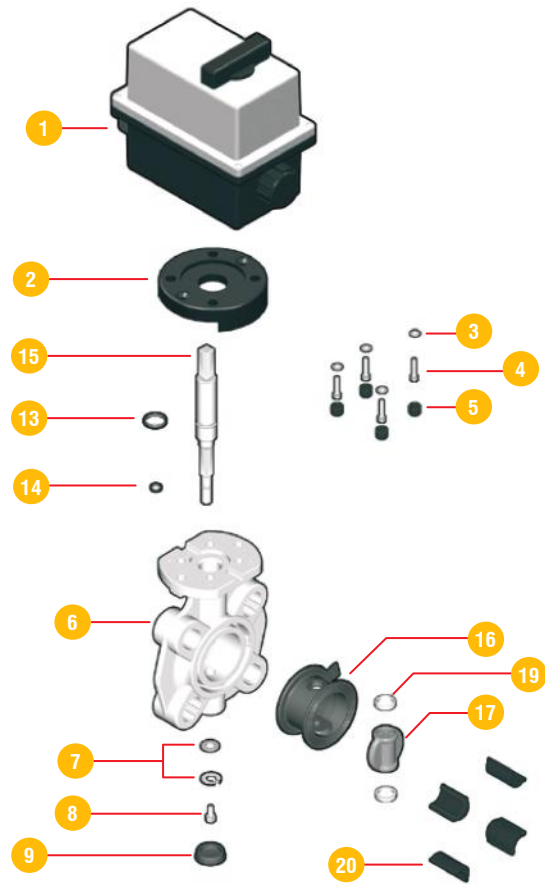
- FK butterfly valve is mounted with suitable electric quarter turn actuator using a flange plate as per ISO 5211.
- Electric actuators are highly effective in Closed and non humid environment.
- Additional accessories include smart positioner, fail safe unit, heating resistor position feedback.

**PRODUCT**  
**FEATURES**

- On / off or modulating functions.
- Thermoplastic case to prevent corrosion.
- Manual over ride as standard, availability of wide range of accessories.

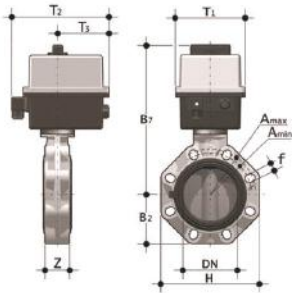
## ELECTRICALLY ACTUATED BUTTERFLY VALVE

### COMPONENTS Exploded View



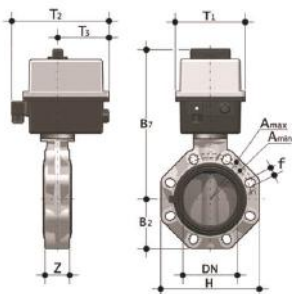
No.	Name	Quantity	Material
01	Electric actuator	1	PA6-Nylon
02	Actuation adapter	1	PP-GR
03	Washer	4	Stainless steel
04	Screw	4	Stainless steel
05	Protection cap	4	PE
06	Body	1	PP-GR
07	Washer	2	Stainless steel
08	Screw	4	Stainless steel
09	Protection cap	1	PE
10	Seeger ring	2	Stainless steel
11	Bush O-ring	2	EPDM-FPM
12	Bush	1	Nylon
13	Shaft O-ring	1	EPDM-FPM
14	Shaft O-ring	1	EPDM-FPM
15	Shaft	1	Stainless steel
16	Primary liner	1	EPDM-FPM
17	Disc	1	PVC-U, PP-H, PVC-C, PVDF, ABS
18	Disc O-ring	2	EPDM-FPM
19	Anti-friction ring	2	PTFE
20	Centering inserts	4-8	ABS
21	Reduction sleeve	1	Stainless steel

## ELECTRICALLY ACTUATED BUTTERFLY VALVE



**CONNECTION TYPE**  
FKOV / CE 90-240V AC DN 40 - 100

PART #	Size	DIMENSIONS (mm)													
	d	DN	PN	B2	H	Z	A-Min	A-Max	f	U	B2	T1	T2	T3	g
0507ESH3E50150	1 1/2"	40	16	60	132	33	99	109	19	4	253	92	189	91	2074
0507ESH3E50200	2"	50	16	70	147	43	115	126	19	4	259	92	189	91	2254
0507ESH3E50250	2 1/2"	65	10	80	165	46	128	144	19	4	266	92	189	91	2500
0507ESH3E50300	3"	80	10	93	185	49	145	160	19	12	308	128	204	96	4202
0507ESH3E50400	4"	100	10	107	211	56	165	190	19	8	322	128	204	96	4550
0507ESH3E50500	5"	125	10	120	240	64	204	215	23	8	425	-	-	-	8150
0507ESH3E50600	6"	150	10	134	268	70	230	242	23	8	438	-	-	-	8900
0507ESH3E50800	8"	200	10	161	323	71	280	298	23	8	485	-	-	-	11600



**CONNECTION TYPE**  
FKOV / CE 24V AC / DC DN 125 - 200

PART #	Size	DIMENSIONS (mm)													
	d	DN	PN	B2	H	Z	A-Min	A-Max	f	U	B2	T1	T2	T3	g
0507ESH3E50150	1 1/2"	40	16	60	132	33	99	109	19	4	253	92	189	91	2074
0507ESH3E50200	2"	50	16	70	147	43	115	126	19	4	259	92	189	91	2254
0507ESH3E50250	2 1/2"	65	10	80	165	46	128	144	19	4	266	92	189	91	2500
0507ESH3E50300	3"	80	10	93	185	49	145	160	19	12	308	128	204	96	4202
0507ESH3E50400	4"	100	10	107	211	56	165	190	19	8	322	128	204	96	4550
0507ESH3E50500	5"	125	10	120	240	64	204	215	23	8	425	-	-	-	8150
0507ESH3E50600	6"	150	10	134	268	70	230	242	23	8	438	-	-	-	8900
0507ESH3E50800	8"	200	10	161	323	71	280	298	23	8	485	-	-	-	11600



MANUAL & AUTOMATIC  
VALVES