

VALVES

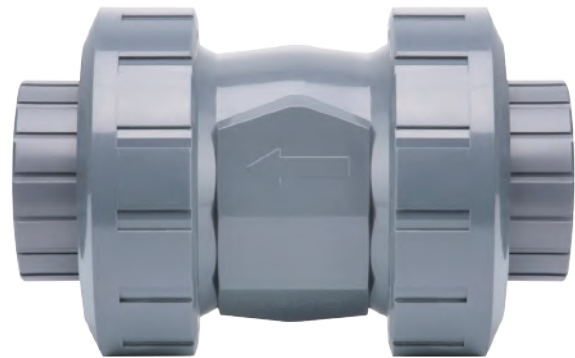
MANUAL & AUTOMATIC

VALVES
ARE MECHANICAL
DEVICES THAT
CONTROL THE **FLOW**
AND **PRESSURE** WITHIN
A SYSTEM
OR PROCESS.

PVC - U
DOUBLE UNION
CHECK VALVE
SOCKET TYPE

General:

Material	PVC-U
Seal Material	ASTM - DIN* - JIS*
Ball Seating Joint	PTFE
Dimensions	DN15 - DN100 1/2" - 4" 16A - 100A



VALVE
SPECIFICATION

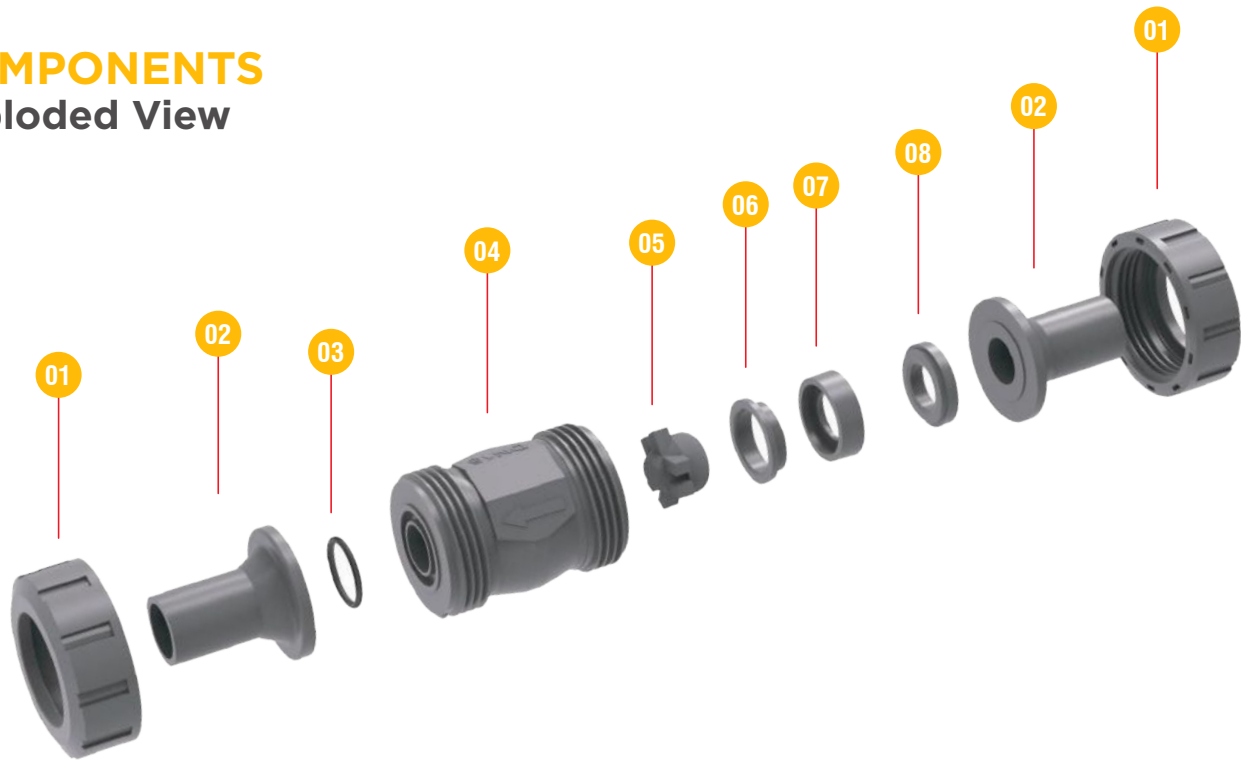
- Material : PVC - U/C
- Size : DN 15-100 1/2"-4" 16A-100A
- Standard : ASTM - DIN* - JIS*
- Connection : Socket - Threaded*
- Colour Body : Dark Gray

PRODUCT
FEATURES

- Simple Economy.
- The material is Nano-Modified to improve the pressure resistance and impact resistance of the product.
- Thickened valve body for high compression resistance.
- Each valve 100% pressure tested.
- The body and seal are specially treated for better performance.

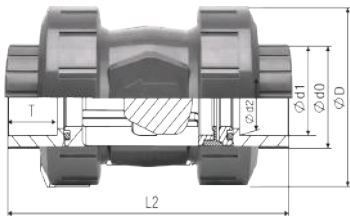
DOUBLE UNION CHECK VALVE PVC - U

COMPONENTS Exploded View



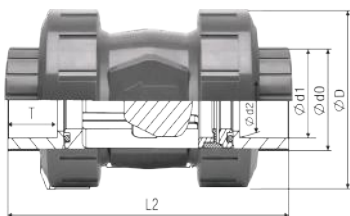
No.	Name	Quantity	Material
01	Faucet Nut	2	PVC-U
02	Connector	2	PVC-U
03	O-Ring	1	PVC-U
04	Body	1	PVC-U
05	Ball	1	EPDM/FPM
06	Ball Seal	1	PVC-U
07	Locating Ring	1	PVC-U
08	O-Ring	2	EPDM/FPM

DOUBLE UNION CHECK VALVE PVC - U



CONNECTION TYPES ASTM SOLVENT SOCKET SERIES

PART #	Size	DIMENSIONS (mm)							
	(d)	DN	PN	D	dO	d1	d2	T	L
0507BCV3EI0050	1/2"	15	16	52	27	22	21	23	108
0507BCV3EI0075	3/4"	20	16	59	33	27	26	27	124
0507BCV3EI0100	1"	25	16	70	41	34	33	30	137
0507BCV3EI0125	1 1/4"	32	16	85	50	42	42	33	162
0507BCV3EI0150	1 1/2"	40	16	100	60	49	48	36	169
0507BCV3EI0200	2"	50	16	122	76	61	60	39	188
0507BCV3EI0250	2 1/2"	65	16	159	90	73	73	46	237
0507BCV3EI0300	3"	80	16	192	105	89	89	49	249
0507BCV3EI0400	4"	100	16	224	128	115	114	58	291



CONNECTION TYPES METRIC SOLVENT SOCKET SERIES

PART #	Size	DIMENSIONS (mm)							
	(d)	DN	PN	D	dO	d1	d2	T	L
0510BCV3EI0050	20	15	16	52	27	20	20	17	96
0510BCV3EI0075	25	20	16	59	33	25	25	20	110
0510BCV3EI0100	32	25	16	70	41	32	32	23	123
0510BCV3EI0125	40	32	16	85	50	40	40	27	150
0510BCV3EI0150	50	40	16	99	60	50	50	32	161
0510BCV3EI0200	63	50	16	122	76	63	63	39	186
0510BCV3EI0250	75	65	16	159	90	75	75	45	236
0510BCV3EI0300	90	80	16	192	105	91	90	52	255
0510BCV3EI0400	110	100	16	224	128	111	110	62	299



MANUAL & AUTOMATIC
VALVES