

# VALVES

MANUAL & AUTOMATIC

**VALVES**  
ARE MECHANICAL  
DEVICES THAT  
CONTROL THE **FLOW**  
AND **PRESSURE** WITHIN  
**A SYSTEM**  
OR PROCESS.

**PVC - U**  
**FKOV/LM**  
**BUTTERFLY**  
**VALVE**

**General:**

<b>Material</b>	PVC-U / PPGR
<b>Seal Material</b>	EPDM / FPM
<b>Pressure Rating</b>	PN 16 / PN 6
<b>Dimensions</b>	DN40 - 400



**VALVE**  
**SPECIFICATION**

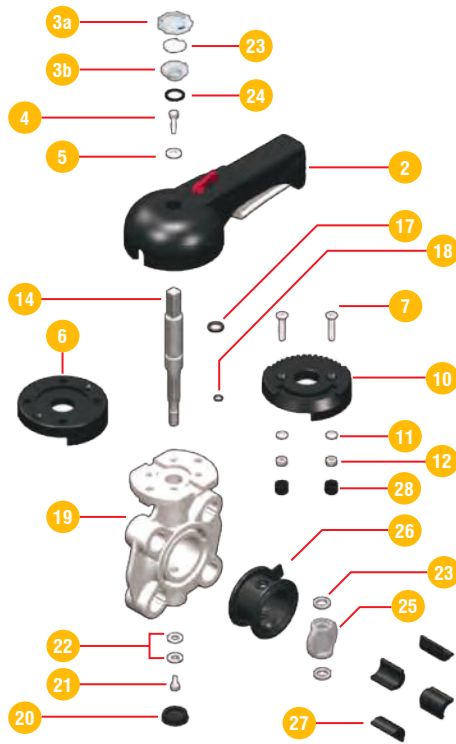
- Bi-directional centric butterfly valve.
- Body PP-GR resistant to UV rays.
- Valve material (PVC-U /EPDM) is compatible with regulations for water conveyance, drinking water and other food substances.
- 12 Different locking positions.

**PRODUCT**  
**FEATURES**

- Ergonomic handle In Hi-PVC equipped with locking and unlocking device.
- Disk available In different thermo plastic materials (PVC-U / PVC-C / PP-H / PVD-F)
- Stainless steel AISI 316 square section stem completely isolated from the fluid.
- Drilling pattern according To DIN Or ANSI standard.
- Can be easily mounted between DIN/ANSI/JIS flanges.

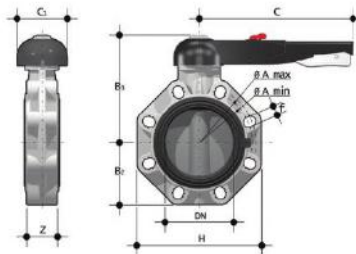
# BUTTERFLY VALVE FKOV/LM

## COMPONENTS Exploded View



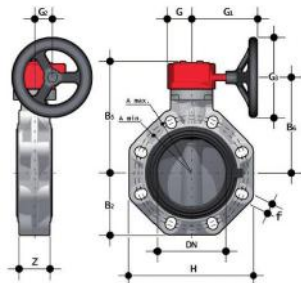
No.	Name	Quantity	Material
01	Position indicator	1	PA
02	Handle	1	HIPVC
03	Transparent protection plug	1	Stainless Steel
04	Fastening screw	1	PVC
05	Washer	1	Stainless Steel
06	Flange	1	PP-GR
07	Screw	2	Stainless steel
08	Tag holder	1	PVC-U
09	O-Ring	1	NBR
10	Plate	1	PP-GR
11	Washer	2	Stainless Steel
12	Nut	2	Stainless steel
13	Seeger Ring	2	Stainless steel
14	Stem	1	Stainless steel 316
15	Bush O-Ring	2	FKM
16	Bush	1	Nylon
17	Stem O-Ring	1	FKM
18	Stem O-Ring	1	FKM
19	Body	1	PP-GR
20	Protection plug	1	PE
21	Screw	1	Stainless steel
22	Washer	1	Stainless steel
23	Anti-friction Ring	2	PTFE
24	Disk O-Ring	2	FKM
25	Disk	1	PVC-U
26	Liner	1	EPDM o FKM
27	Inserts	4-8	ABS
28	Plug	2	PE

## BUTTERFLY VALVE FKOV/LM



### CONNECTION TYPES HAND OPERATED BUTTERFLY VALVE FKOVL/M

PART#	Size	DIMENSIONS (mm)								
	d	DN	PN	B2	B3	C	C1	H	Z	U
0510BFK3E50150	50	40	10	60	137	175	100	132	33	4
0510BFK3E50200	63	50	10	70	143	175	100	147	43	4
0510BFK3E50250	75	65	10	80	164	175	110	165	46	4
0510BFK3E50300	90	80	10	93	178	272	110	185	49	8
0510BFK3E50400	110	100	10	107	192	272	110	211	56	8
0510BFK3E50500	140	125	10	120	212	330	110	240	64	8
0510BFK3E50600	160	150	10	134	225	330	110	268	70	8
0510BFK3E50800	225	200	10	161	272	420	122	323	71	8



### CONNECTION TYPES GEARBOX OPERATED BUTTERFLY VALVE FKOVR/M

PART#	Size	DIMENSIONS (mm)								
	d	DN	PN	G	G1	G2	G3	H	U	Z
0510GFK3E50150	50	40	16	48	135	39	125	132	4	33
0510GFK3E50200	63	50	16	48	135	39	125	147	4	43
0510GFK3E50250	75	65	10	48	135	39	125	165	4	46
0510GFK3E50300	90	80	10	48	135	39	125	185	12	49
0510GFK3E50400	110	100	10	48	135	39	125	211	8	56
0510GFK3E50600	160	150	10	48	144	39	200	268	8	70
0510GFK3E50800	200	200	10	65	204	60	200	323	8	71
0510GFK3E501000	250	250	10	88	236	76	250	405	12	114
0510GFK3E501200	315	300	8	88	236	76	250	475	12	114
0510GFK3E501400	355	350	7	88	361	80	300	530	16	126
0510GFK3E501600	400	400	6	88	361	80	300	594	16	169



MANUAL & AUTOMATIC  
VALVES