

VALVES

MANUAL & AUTOMATIC

VALVES
ARE MECHANICAL
DEVICES THAT
CONTROL THE **FLOW**
AND **PRESSURE** WITHIN
A SYSTEM
OR PROCESS.

PVC - U SEDIMENT STRAINER

General:

Material	PVC-U
Seal Material	EPDM or FPM
Mesh Material	PVC Stainless Steel
Dimensions	DN 10 - 100 / 1/2" - 4"



VALVE SPECIFICATION

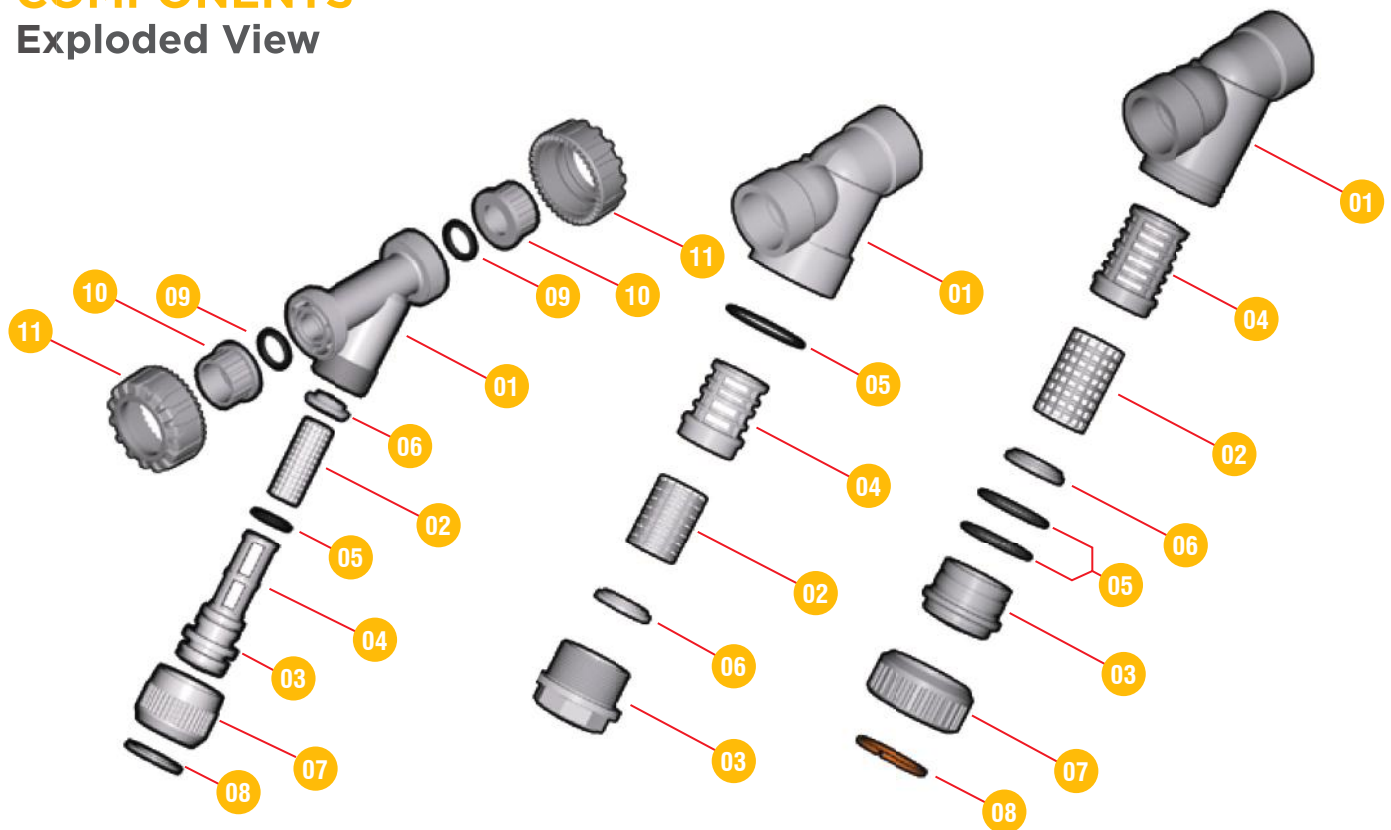
- Material : PVC-U.
- Size : DN 10 - 100 1/2" - 4".
- Standard : Construction criteria : EN ISO 1452, EN ISO 15493.
- Test methods & requirements : ISO 9393.
- Installation criteria : DVS 2204, DVS 2221, UNI 11242.
- Connection : Solvent welding, thread, flanging system.
- Colour Body : Transparent.
- Standard mesh size is 1.0mm (optional 1.5, 2.0 & 2.5).

PRODUCT FEATURES

- Sediment strainer limits the passage of any solid particles present in the fluid transparent design for checking The amount of contamination visually.
- Complete plastic construction to avoid any contamination or corrosion.
- Easy dismantling for cleaning or replacing the filter.
- Valve material PVC-U is compatible with water and flood regulations.
- Maintenance can be performed without dismantling.

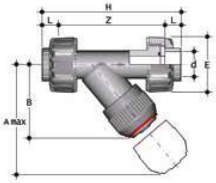
SEDIMENT STRAINER PVC - U

COMPONENTS Exploded View



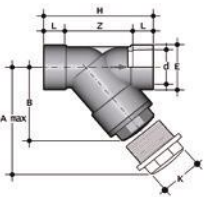
No.	Name	Quantity	Material
01	Body	1	PVC-U
02	Strainer	1	PVC-U/Stainless Steel
03	Bonnet	1	PVC-U
04	Strainer Support	1	PVC-U
05	A-B O-ring	1	EPDM/FPM
06	C O-ring	2	EPDM-FPM
07	Washer	1	PVC- U
08	Union Nut	1	PVC- U
09	Retaining ring	1	PVC- U
10	Socket Seal O-ring	2	EPDM-FPM
11	End connector	2	PVC- U
12	Union Nut	2	PVC- U

SEDIMENT STRAINER PVC - U



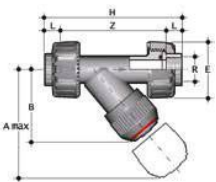
CONNECTION TYPES ASTM SOLVENT SOCKET SERIES

PART #	Size	DIMENSIONS (mm)							
	d	DN	PN	A Max	B	E	H	L	Z
0507RV43E10035	3/8"	10	16	125	72	55	135	14	107
0507RV43E10050	1/2"	15	16	125	72	55	135	16	103
0507RV43E10075	3/4"	20	16	145	84	66	158	19	120
0507RV43E10100	1"	25	16	165	95	75	176	22	132
0507RV43E10125	1.1/4"	32	10	190	111	87	207	26	155
0507RV43E10150	1-1/2"	40	10	210	120	100	243	31	181
0507RV43E10200	2"	50	10	240	139	120	298	38	222



CONNECTION TYPES ASTM SOLVENT SOCKET SERIES

PART #	Size	DIMENSIONS (mm)							
	d	DN	PN	A Max	B	E	H	L	Z
0507RV43E10250	2 1/2"	65	6	300	179	104	243	33	155
0507RV43E10300	3"	80	4	325	192	116	262	37	160
0507RV43E10400	4"	100	4	285	231	138	325	61	203



CONNECTION TYPE BSP FEMALE THREADED SERIES

PART #	Size	DIMENSIONS (mm)							
	d	DN	PN	A Max	B	E	H	L	Z
0507RV43E30035	3/8"	10	16	125	72	55	135	11.4	112.2
0507RV43E30050	1/2"	15	16	125	72	55	142	15	112
0507RV43E30075	3/4"	20	16	145	84	66	159	16.3	126.4
0507RV43E30100	1"	25	16	165	95	75	183	19.1	144.8
0507RV43E30125	1 1/4"	32	10	190	111	87	214	21.4	171.2
0507RV43E30150	1 1/2"	40	10	210	120	100	235	21.4	192.2
0507RV43E30200	2"	50	10	240	139	120	285	25.7	233.6



MANUAL & AUTOMATIC
VALVES