

VALVES

MANUAL & AUTOMATIC

VALVES
ARE MECHANICAL
DEVICES THAT
CONTROL THE **FLOW**
AND **PRESSURE** WITHIN
A SYSTEM
OR PROCESS.

PVC - U THREE WAY BALL VALVE

General:

Material	PVC-U
Seal Material	EPDM-FPM
Ball Seating Joint	PTFE
Dimensions	DN10 - DN50



VALVE SPECIFICATION

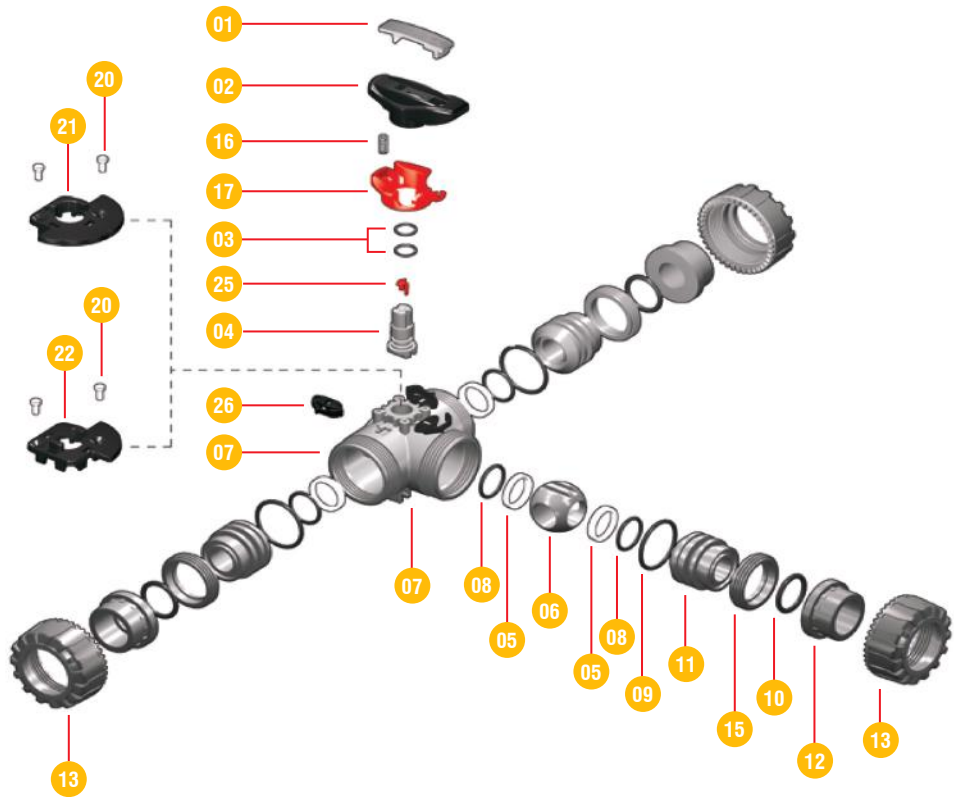
- Material : PVC-U.
- Size : DN 10 - 50.
- Nominal Pressure: PN 16.
- Temperature Range: 0-60° C.
- Control Options: Manual control; electric actuator
- Connection : Socket / Threaded.
- Colour : Dark gray.

PRODUCT FEATURES

- True union diverting and mixing ball valve.
- Seat stop ball carrier system lets you micro adjust ball seats and minimize axial force effects.
- Manual, electric and pneumatic control options.
- Equipped with visual ball indicator system for correct handle installation.
- Standard L-port permits flow from common port to either left or right port or to off position.
- Eliminates need for additional valve and tee.

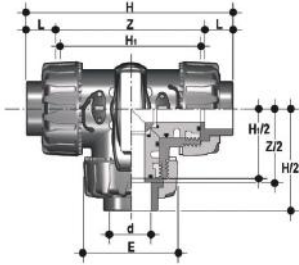
THREE WAY BALL VALVE PVC - U

COMPONENTS Exploded View



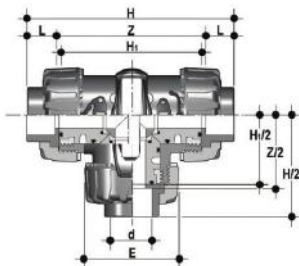
No.	Name	Quantity	Material
01	Hand Insert	1	PVC-U
02	Handle	1	HIPVC
03	Stem O-rings	2	EPDM-FPM
04	Stem	1	PE-PTFE
05	Ball Seat	4	PVC-U
06	Ball	1	PVC-U
07	Body	1	PVC-U
08	Ball Seat O ring	4	EPDM - FPM
09	Radial Seal O-ring	3	EPDM - FPM
10	Socket Seal O-Ring	3	EPDM - FPM
11	Ball Seat Carrier	3	PVC-U
12	End Connector	3	PVC-U
13	Union Nut	3	EPDM-FPM
15	Threaded ring	3	PVC-U
16	Spring - SHKD Accessory	1	PVC-U
17	Safety Handle Block - SHKD Accessory	1	PP-GR
20	Rivet for LTKD	2	POM
21	LTKD 180°	1	POM
22	LTKD 90°	1	POM
25	Position Indicator	1	POM
26	Dual Block	3	POM

THREE WAY BALL VALVE PVC - U



CONNECTION TYPES L-PORT ASTM SOLVENT SOCKET SERIES

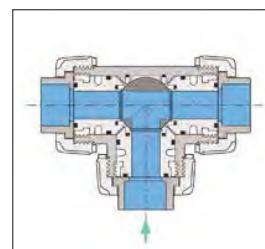
PART#	Size	DIMENSIONS (mm)							
	d	DN	PN	E	H	H1	L	Z	g
05073WL1E10035	3/8"	10	16	54	118	80	14.7	88.6	310
05073WL1E10050	1/2"	15	16	54	118	80	17	85	310
05073WL1E10075	3/4"	20	16	65	145	100	19	106.8	550
05073WL1E10100	1"	25	16	73	160	110	22.5	115	790
05073WL1E10125	1 1/4"	32	16	86	188.5	131	26	136.6	1275
05073WL1E10150	1 1/2"	40	16	98	219	148	30.2	159	1660
05073WL1E10200	2"	50	16	122	266.5	179	36.2	194.2	2800



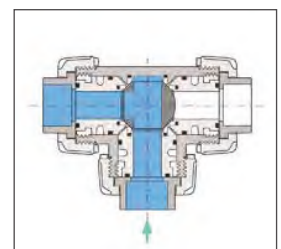
CONNECTION TYPES T-PORT ASTM SOLVENT SOCKET SERIES

PART#	Size	DIMENSIONS (mm)							
	d	DN	PN	E	H	H1	L	Z	g
05073WT1E10035	3/8"	10	16	54	118	80	11.4	95	310
05073WT1E10050	1/2"	15	16	54	125	80	15	95	310
05073WT1E10075	3/4"	20	16	65	146	100	16.3	114	550
05073WT1E10100	1"	25	16	73	166	110	19.1	129	790
05073WT1E10125	1" 1/4	32	16	86	195.5	131	21.4	151	1275
05073WT1E10150	1" 1/2	40	16	98	211	148	21.4	166	1660
05073WT1E10200	2"	50	16	122	253.5	179	25.7	199	2800

A - T-Port ball Valve
0° - Mixing



B - L-Port Ball Valve
90° - Diverting





MANUAL & AUTOMATIC
VALVES