

VALVES

MANUAL & AUTOMATIC

VALVES
ARE MECHANICAL
DEVICES THAT
CONTROL THE **FLOW**
AND **PRESSURE** WITHIN
A SYSTEM
OR PROCESS.

PVC - U
TRUE UNION
BALL VALVE
VKD

General:

Material	PVC-U
Seal Material	EPDM-FPM
Ball Seating Joint	PTFE
Dimensions	DN65 - DN100



VALVE SPECIFICATION

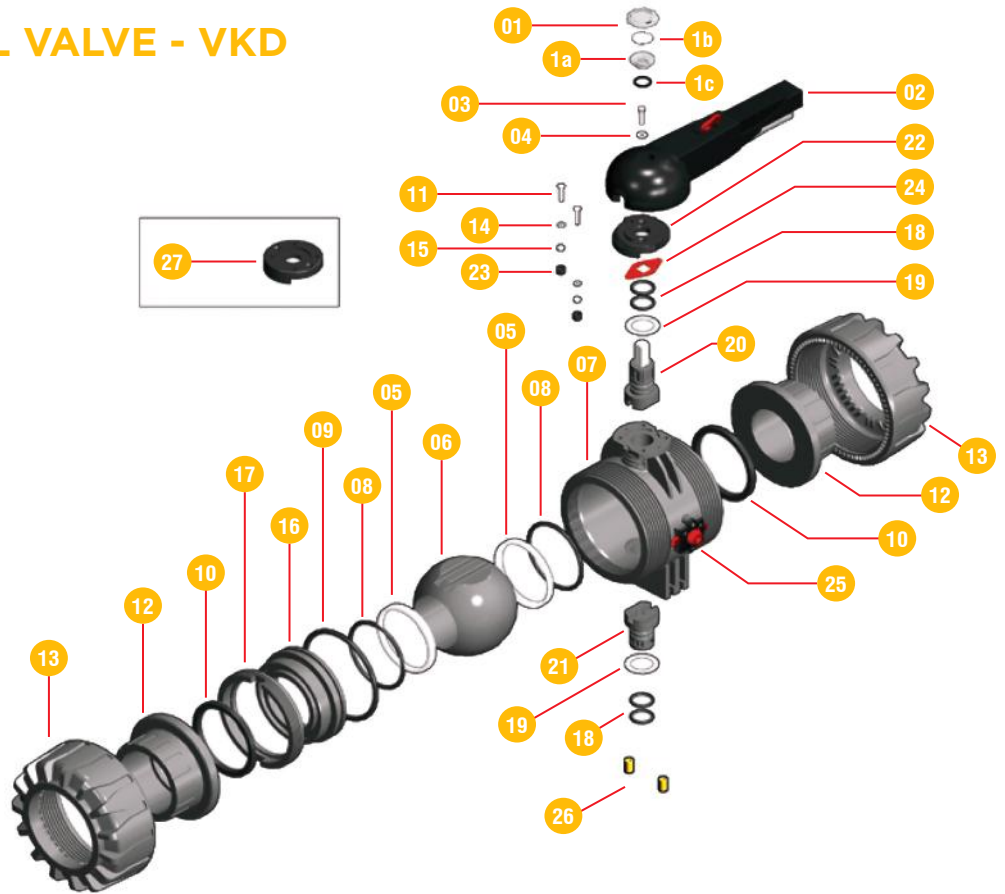
- Material : PVC-U.
- Size : DN 65 - 100.
- Standard - Construction Criteria: EN ISO 16135, EN ISO 1452, EN ISO 15493
 Test Methods and Requirements : ISO 9393.
- Installation Criteria : DVS 2204, DVS 2221, UNI 11242
 Actuator Couplings : ISO 5211.
- Connection : Socket, Threaded, Flanged.
- Colour : Dark gray.

PRODUCT FEATURES

- Designed for industrial application resulting in higher number of leak free operation cycles.
- Handle made from HIPVC Can also be used as tool to adjust ball seat carrier.
- Built in lockout system to prevent undesirable operation dual shaft seal eliminates leakage.
- Floating full bore ball with high surface finish.
- Can be mounted with electric or pneumatic actuator using PQ adaptor.
- Built in spanner wrench on the handle for assembly and dis-assembly.

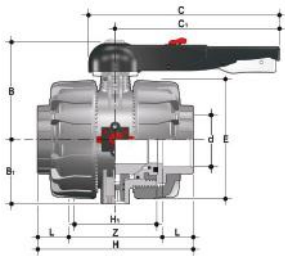
TRUE UNION BALL VALVE - VKD PVC - U

COMPONENTS Exploded View



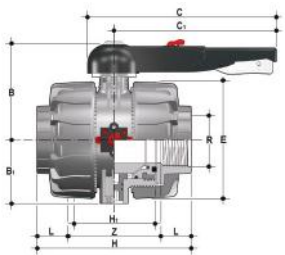
No.	Name	Quantity	Material	No.	Name	Quantity	Material
1-1a	Transparent protection plug	1	PVC	18	Stems Oring	4	PVC-U
1-1b	Tag Holder	1	PVC	19	Anti-Friction disk	2	EPDM-FPM
1-1c	O-Ring	1	NBR	20	Upper stem	1	Stainless Steel
02	Handle	1	HIPVC	21	Lower stem	1	PVC-U
03	Screw	1	Stainless Steel	22	Plate	1	PP-GR
04	Washer	1	Stainless Steel	23	Protection plug	1	PE
05	Ball Seat	2	PTFE	24	Position indicator	1	PA
06	Ball	1	PVC-1	25	DUAL Block	1	PP-GR
07	Body	1	PVC-1	26	Threaded - Inserts	2	Brass
08	Ball Seat Ring	2	EPDM-FPM	27	Actuation plate	1	PP-GR
09	Radial Seal O-Ring	1	EPDM-FPM				
10	Socket Seal O-Ring	2	EPDM-FPM				
11	Screw	2	Stainless Steel				
12	End connector	2	PVC-U				
13	Union nut	2	PVC-U				
14	Washer	2	Stainless Steel				
15	Nut	2	Stainless steel				
16	Ball Seat Carrier	1	PVC-U				
17	Threaded ring	1	PVC-U				

TRUE UNION BALL VALVE - VKD PVC - U



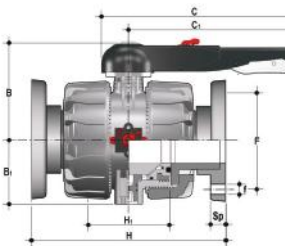
CONNECTION TYPES ASTM SOLVENT SOCKET SERIES

PART #	Size	DIMENSIONS (mm)											
	d	DN	PN	B	B1	C	C1	E	H	H1	L	Z	g
0507VKD1E10250	2 1/2"	65	16	164	87	225	175	164	235	133	44	147	4380
0507VKD1E10300	3"	80	16	177	105	327	272	203	270	149	51	168	7250
0507VKD1E10400	4"	100	16	195	129	385	330	238	308	167	63	186	10995



CONNECTION TYPES BSP FEMALE THREADED SERIES

PART #	Size	DIMENSIONS (mm)											
	d	DN	PN	B	B1	C	C1	E	H	H1	L	Z	g
0507VKD1E30250	2 1/2"	65	16	164	87	225	175	164	235	133	30	175	4395
0507VKD1E30300	3"	80	16	177	105	327	272	203	270	149	34	203	7260
0507VKD1E30400	4"	100	16	195	129	385	330	238	308	167	40	229	11100



CONNECTION TYPES ANSI B-16.5 FLANGED SERIES

PART #	Size	DIMENSIONS (mm)												
	d	DN	PN	B	B1	C	C1	F	f	H	H1	Sp	U	g
0507VKD1E50250	2 1/2"	65	16	164	87	225	175	139.7	18	290	133	21	4	6610
0507VKD1E50300	3"	80	16	177	105	327	272	152.4	18	310	149	21.5	8	9330
0507VKD1E50400	4"	100	16	195	129	385	330	190.5	18	350	167	21.5	8	13815



MANUAL & AUTOMATIC
VALVES