

VALVES

MANUAL & AUTOMATIC

VALVES
ARE MECHANICAL
DEVICES THAT
CONTROL THE **FLOW**
AND **PRESSURE** WITHIN
A SYSTEM
OR PROCESS.

PVC - U VKR-REGULATING BALL VALVE

General:

Material	PVC-U
Seal Material	EPDM, FPM
Ball Seating Joint	PTFE (Ball Seats)
Dimensions	DN10 - DN50



VALVE SPECIFICATION

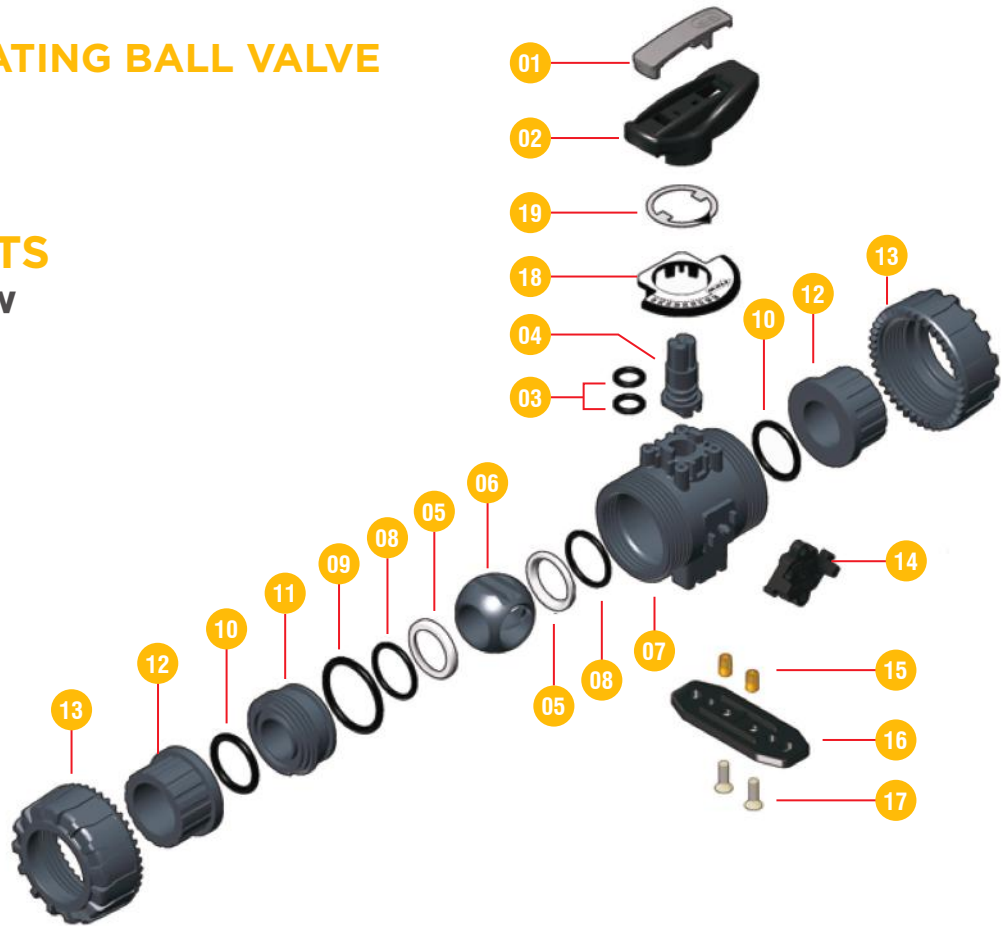
- Material : PVC-U
- Size : DN 10 - 50
- Standard : Construction Criteria :
EN ISO 16135, EN ISO 1452, EN ISO 15493
Test Methods and Requirements :
ISO 9393
Installation Criteria :
DVS 2204, DVS 2221, UNI 11242
Actuator Couplings : ISO 5211
- Connection : Socket, Threaded, Flanged
- Colour Body : Dark Gray

PRODUCT FEATURES

- Unique ball design provides linear flow adjustment throughout its range of operation.
- Flow direction indication plate and opening angle with graduated scale with 5° degree detail for clear and accurate readings.
- Special ball design provides linear flow adjustment throughout its range of operation even the valve is open a few degrees and guarantees minimum pressure drop.
- Degree indicator plate and indicator line on handle.
- Stem extension also available.

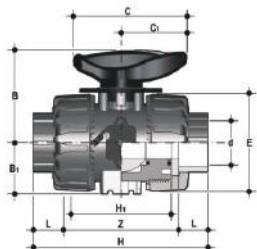
VKR - REGULATING BALL VALVE PVC - U

COMPONENTS Exploded View



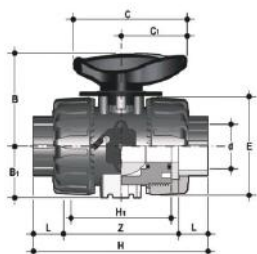
No.	Name	Quantity	Material
01	Hand Insert	1	PVC-U
02	Handle	1	HIPVC
03	Stem O-rings	2	EPDM-FPM
04	Stem	1	PVC-U
05	Ball Seat	2	PTFE
06	Patented ball design	1	PVC-U
07	Body	1	PVC-U
08	Ball Seat O ring	2	EPDM - FPM
09	Radial Seal O-ring	1	EPDM - FPM
10	Socket Seal O-ring	2	EPDM - FPM
11	Ball Seat Carrier	1	PVC-U
12	End Connector	2	PVC-U
13	Union Nut	2	PVC-U
14	Dual Block	1	POM
15	Threaded insert	2	Stainless Steel or Brass
16	Distance Plate	1	PP-GR
17	Screw	2	Stainless Steel
18	Graduated plate	1	POM-PVC
19	Indicator	1	PVC

VKR - REGULATING BALL VALVE PVC - U



CONNECTION TYPES METRIC SOLVENT SOCKET SERIES

PART#	Size	DIMENSIONS (mm)											
	d	DN	PN	B	B1	C	C1	E	H	H1	L	Z	g
0509VKR1E10035	3/8"	10	16	54	29	67	40	54	117	65	19.5	78	230
0509VKR1E1050	1/2"	15	16	54	29	67	40	54	117	65	22.5	72	215
0509VKR1E10075	3/4"	20	16	65	34.5	85	49	65	129	70	25.5	78	345
0509VKR1E10100	1"	25	16	69.5	39	85	49	73	142	78	28.7	84.6	448
0509VKR1E10125	1" 1/4	32	16	82.5	46	108	64	89	162	88	32	98	718
0509VKR1E10150	1" 1/2	40	16	89	52	108	64	98	172	93	35	102	975
0509VKR1E10200	2"	50	16	108	62	134	76	122	199	111	38.2	122.6	1712



CONNECTION TYPES ASTM SOLVENT SOCKET SERIES

PART#	Size	DIMENSIONS (mm)											
	d	DN	PN	B	B1	C	C1	E	H	H1	L	Z	g
0507VKR1E10035	3/8"	10	16	54	29	67	40	54	103	65	13.7	75.6	215
0507VKR1E1050	1/2"	15	16	54	29	67	40	54	110	65	17.8	75.4	210
0507VKR1E10075	3/4"	20	16	65	34.5	85	49	65	116	70	18	81	335
0507VKR1E10100	1"	25	16	69.5	39	85	49	73	134	78	22.6	89.8	448
0507VKR1E10125	1" 1/4	32	16	82.5	46	108	64	89	153	88	25.1	102.8	678
0507VKR1E10150	1" 1/2	40	16	89	52	108	64	98	156	93	24.7	106.6	955
0507VKR1E10200	2"	50	16	108	62	134	76	122	186	111	29.6	126.8	1667



MANUAL & AUTOMATIC
VALVES